

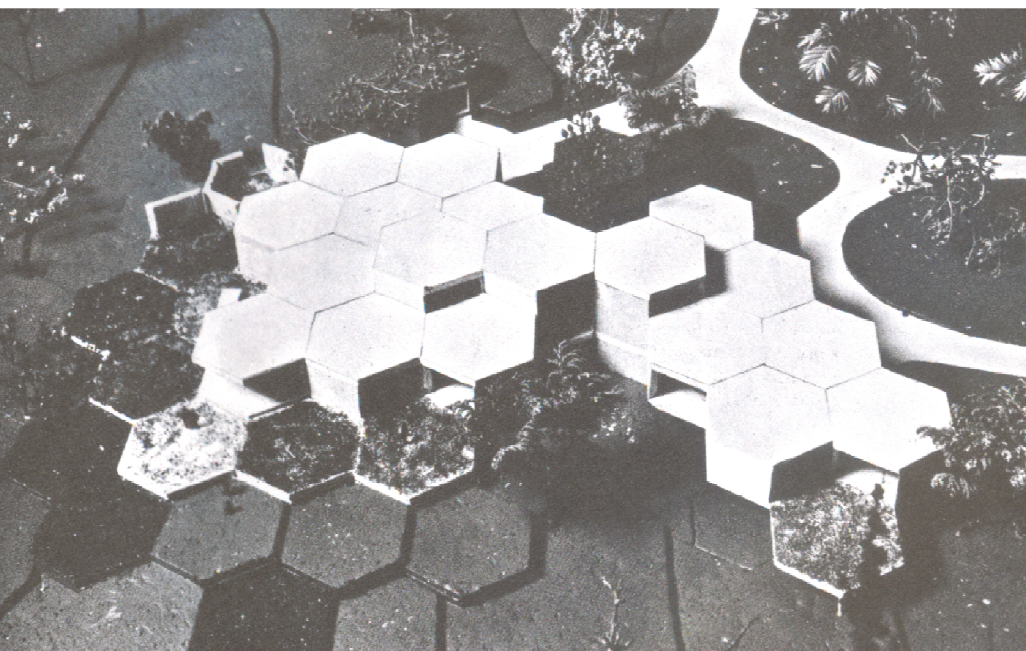
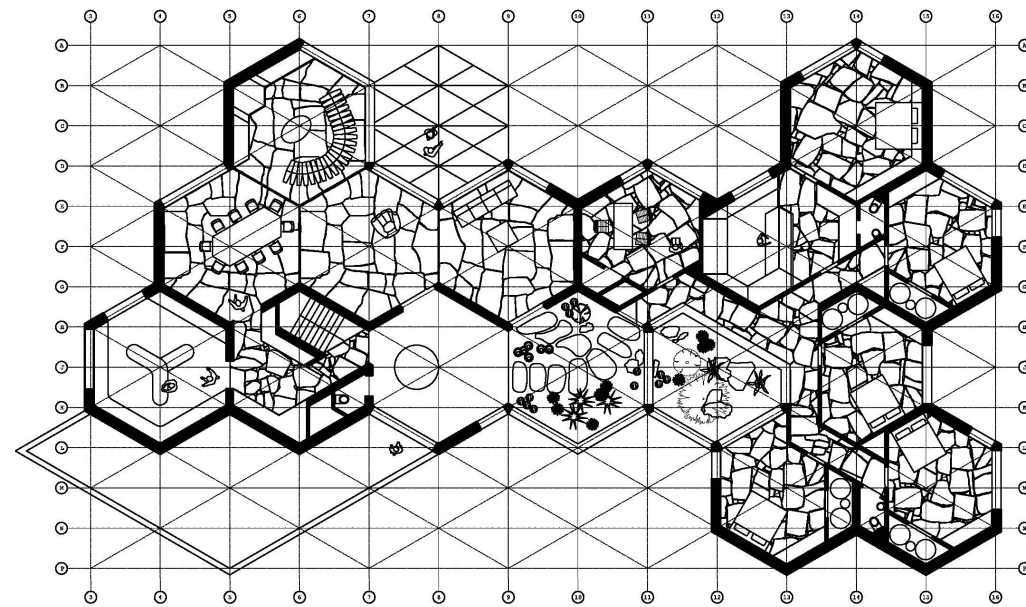
medium

eer

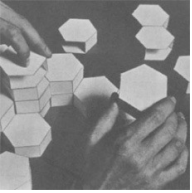
family huse renovation
completed

house i.p.

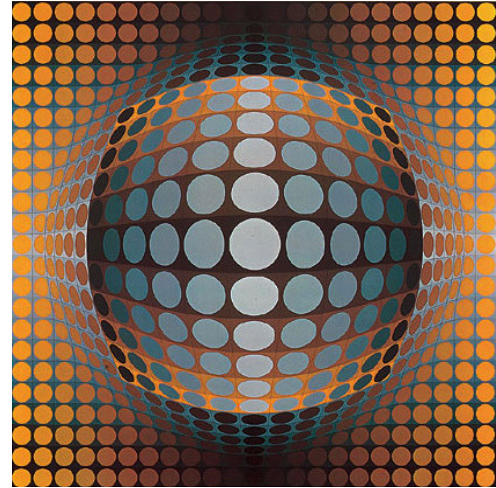
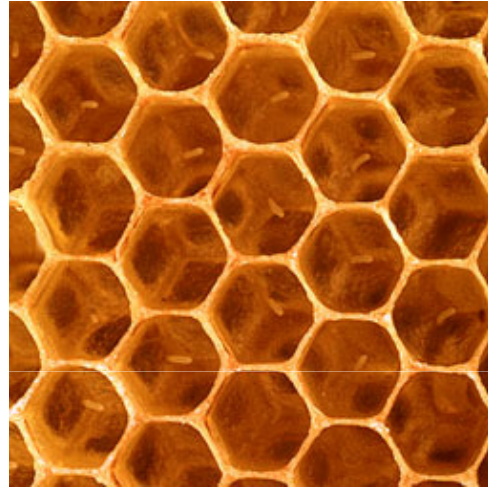
introduction: the house is one of the last build examples of the metabolist movement ideas founded in the early 70's: large scale, flexible and extensible structures should enable the organic growth process of our futuristic cities. conceived and build by the belgian company herpain, it represents a unique concept and is an exceptional capture of a timeframe: the prosperous years of 20th century industrialisation. intensive research was done by the company herpain to bring the industrial process into the building industry. quoting robert herpain : "builders as a whole form the most craft-orientated and the most disorganized profession. it is still at the stage of trial-and-error empiricism that has long since been left behind in the other techniques, mechanical or electronic. would you trust your money to a handyman and his pals to manufacture your car? that's what's still happening in the building trade" "and placed on the site according to a planning grid or flexible and varied harmonious architectural conception".



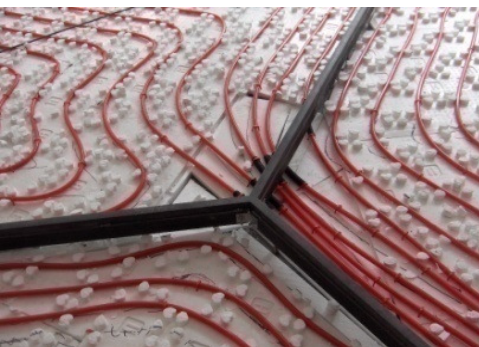
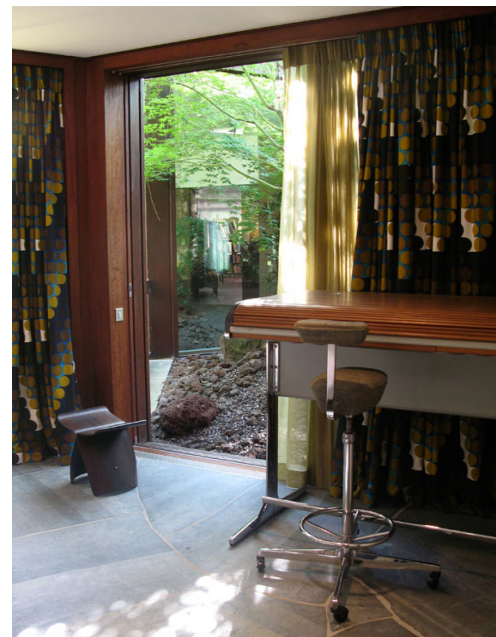
H-structure: the hexagonal superstructures are made of reinforced concrete and connected to each other. the six corners are distributed over a triangular pattern to form a honeycomb structure with incorporated technical ducts. this concept gave the possibility to create an "open plan" with as less columns as possible. a small variety of basic modular components are standardised, factory made and placed within the grid. the client has different options: within this system, the overall structure can be adapted to personal requirements or to regional conditions.



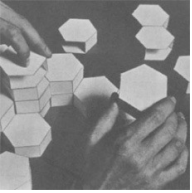
house i.p.



art and nature: science and art are often evolving on the same path: while men put its first steps on the moon, scientist discovered all kind of molecules with clearly distinctive geometric shapes under the electronic beams of their microscopes. many artists were inspired by these new evolutions and translated them into an abstract art. the owner desires to expose a vast collection of artwork, fabric and furniture from this era.



floor: the floor was initially covered with carpet, the owner wanted to replace it with a more hygienic hard floor. in the meantime, the original heating system by air distributed by an extensive system of recessed ducts, would have to be replaced with a more economic and comfortable system of integrated floor heating. the complete package of the non-structural upper flooring was removed and replaced by a system of low temperature heating pipes covered with the natural stone of "pierre bleu du hainaut" in "opus incertum" in the entire house. the use of maximum dimension of the irregular stones (up to 1.5m²) reinforces the "seventies" feeling of the original house.



house i.p.

sanitary: the existing sanitary were conceived like compact airplane toilet units. modern equipment is introduced in a made to measure steel furniture, colour and design reinforce the original spirit of the house.



light: small circular light wells allow plenty of natural daylight in most of the rooms. to experience this feeling of being showered in light in the evening or on darker days, artificial light is integrated in these wells. long metal tubes are positioned on the inner surfaces of these cylinders. these new elements are coloured bright red or green creating an optical illusion. architecture becomes op-art.

project family house renovation
function family house
location st genesius rode belgium
year 2007

eer architectural design
[info@eerdesign.com](mailto:info@eerddesign.com)